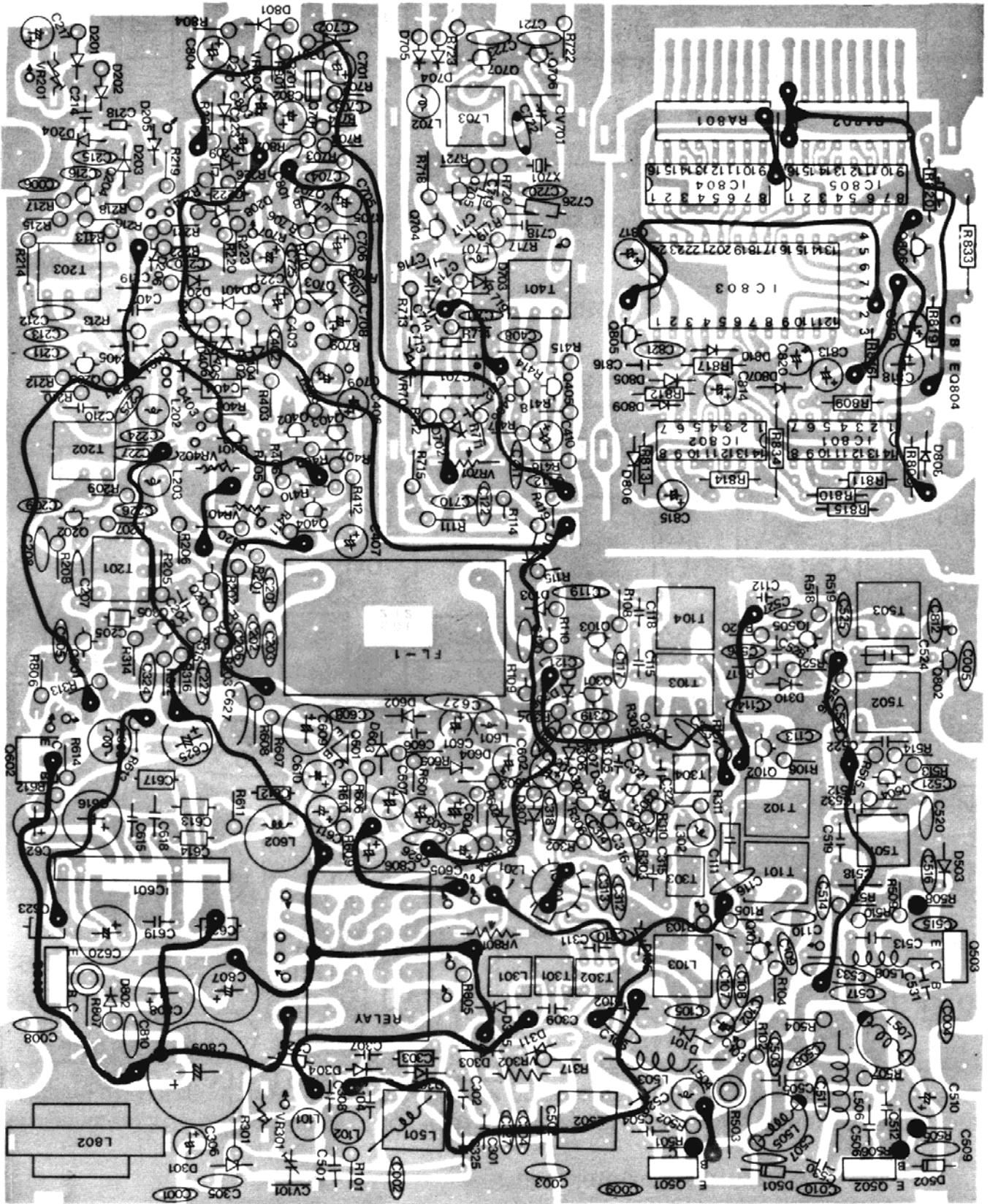


HIGHEST NO.	VACANT
R 14	R 4
VR 2	R 13
C 14	C 5
Q 1	
D 3	
IC-1	



## SBE-39 CB PARTS LIST

SYMBOL #	PART #	DESCRIPTION
C1	4-100M16	Capacitor, 100 mfd, 16V, Electrolytic
C2	4-4.7M25	Capacitor, 4.7 mfd, 25V, Electrolytic
C3	1-.01M50	Capacitor, 0.01 mfd, 50V, Ceramic
C4	1-.01M50	Capacitor, 0.01 mfd, 50V, Ceramic
C6	4-4.7M25	Capacitor, 4.7 mfd, 25V, Electrolytic
C7	4-22M16	Capacitor, 22 mfd, 16V, Electrolytic
C8	4-1M50	Capacitor, 1 mfd, 50V, Electrolytic
C9	1-.001M50	Capacitor, 0.001 mfd, 50V, Ceramic
C10	4-1M50	Capacitor, 1 mfd, 50V, Electrolytic
C11	4-1M50	Capacitor, 1 mfd, 50V, Electrolytic
C12	3-.05M50	Capacitor, 0.05 mfd, 50V, Mylar
C13	3-.1M50	Capacitor, 0.1 mfd, 50V, Mylar
C14	3-.1M50	Capacitor, 0.1 mfd, 50V, Mylar
C001	1-.01M50	Capacitor, 0.01 mfd, 50V, Ceramic
C002	1-.01M50	Capacitor, 0.01 mfd, 50V, Ceramic
C003	1-.01M50	Capacitor, 0.01 mfd, 50V, Ceramic
C004	1-.01M50	Capacitor, 0.01 mfd, 50V, Ceramic
C005	1-.01M50	Capacitor, 0.01 mfd, 50V, Ceramic
C006	1-.01M50	Capacitor, 0.01 mfd, 50V, Ceramic
C007	1-.01M50	Capacitor, 0.01 mfd, 50V, Ceramic
C008	1-.01M50	Capacitor, 0.01 mfd, 50V, Ceramic
C009	1-.01M50	Capacitor, 0.01 mfd, 50V, Ceramic
C010	1-.01M50	Capacitor, 0.01 mfd, 50V, Ceramic
C101	2-100P50	Capacitor, 100 pfd, 50V, Mica
C102	1-.01M50	Capacitor, 0.01 mfd, 50V, Ceramic
C103	4-1M16	Capacitor, 1 mfd, 16V, Electrolytic
C104	2-24P50	Capacitor, 24 pfd, 50V, Mica
C105	1-.01M50	Capacitor, 0.01 mfd, 50V, Ceramic
C106	1-.01M50	Capacitor, 0.01 mfd, 50V, Ceramic
C107	1-.01M50	Capacitor, 0.01 mfd, 50V, Ceramic
C108	3-.04M50	Capacitor, 0.04 mfd, 50V, Mylar
C109	1-.01M50	Capacitor, 0.01 mfd, 50V, Ceramic
C110	1-.01M50	Capacitor, 0.01 mfd, 50V, Ceramic
C111	8000-00006-277	Capacitor, 1 pfd, 50V, Gimmic
C112	2-5P50	Capacitor, 5 pfd, 50V, Mica
C113	1-.01M50	Capacitor, 0.01 mfd, 50V, Ceramic
C114	1-.01M50	Capacitor, 0.01 mfd, 50V, Ceramic
C115	2-15P50	Capacitor, 15 pfd, 50V, Mica
C116	1-.01M50	Capacitor, 0.01 mfd, 50V, Ceramic
C118	2-15P50	Capacitor, 15 pfd, 50V, Mica
C119	1-.001M50	Capacitor, 0.001 mfd, 50V, Ceramic
C120	1-.001M50	Capacitor, 0.001 mfd, 50V, Ceramic
C121	1-.01M50	Capacitor, 0.01 mfd, 50V, Ceramic
C122	1-.01M50	Capacitor, 0.01 mfd, 50V, Ceramic
C201	1-.001M50	Capacitor, 0.001 mfd, 50V, Ceramic
C202	1-.01M50	Capacitor, 0.01 mfd, 50V, Ceramic
C203	1-.01M50	Capacitor, 0.01 mfd, 50V, Ceramic
C204	2-24P50	Capacitor, 24 pfd, 50V, Mica

<b>SYMBOL #</b>	<b>PART #</b>	<b>DESCRIPTION</b>
C205	3-.04M50	Capacitor, 0.04 mfd, 50V, Mylar
C206	1-.01M50	Capacitor, 0.01 mfd, 50V, Ceramic
C207	1-.01M50	Capacitor, 0.01 mfd, 50V, Ceramic
C208	3-.04M50	Capacitor, 0.04 mfd, 50V, Mylar
C209	1-.01M50	Capacitor, 0.01 mfd, 50V, Ceramic
C210	2-160P50	Capacitor, 160 pfd, 50V, Mica
C211	3-.01M50	Capacitor, 0.04 mfd, 50V, Mylar
C212	1-.01M50	Capacitor, 0.01 mfd, 50V, Ceramic
C213	1-.01M50	Capacitor, 0.01 mfd, 50V, Ceramic
C214	2-56P50	Capacitor, 56 pfd, 50V, Mica
C215	1-.01M50	Capacitor, 0.01 mfd, 50V, Ceramic
C216	1-.01M50	Capacitor, 0.01 mfd, 50V, Ceramic
C217	4-1M50	Capacitor, 1 mfd, 50V, Electrolytic
C218	3-.04M50	Capacitor, 0.04 mfd, 50V, Mylar
C219	2-160P50	Capacitor, 160 pfd, 50V, Mica
C220	1-.01M50	Capacitor, 0.01 mfd, 50V, Ceramic
C221	4-4.7M25	Capacitor, 4.7 mfd, 25V, Electrolytic
C222	3-.04M50	Capacitor, 0.04 mfd, 50V, Mylar
C223	4-1M50	Capacitor, 1 mfd, 50V, Electrolytic
C224	1-.01M50	Capacitor, 0.01 mfd, 50V, Ceramic
C225	1-.01M50	Capacitor, 0.01 mfd, 50V, Ceramic
C226	1-.01M50	Capacitor, 0.01 mfd, 50V, Ceramic
C227	1-.01M50	Capacitor, 0.01 mfd, 50V, Ceramic
C301	2-150P50	Capacitor, 150 pfd, 50V, Mica
C302	2-15P50	Capacitor, 15 pfd, 50V, Mica
C303	4-.1M50	Capacitor, .1 mfd, 50V, Electrolytic
C304	1-.01M50	Capacitor, 0.01 mfd, 50V, Ceramic
C305	1-.01M50	Capacitor, 0.01 mfd, 50V, Ceramic
C306	4-1M50	Capacitor, 1 mfd, 50V, Electrolytic
C307	2-47P50	Capacitor, 47 pfd, 50V, Mica
C308	2-35P50	Capacitor, 35 pfd, 50V, Mica
C309	2-35P50	Capacitor, 35 pfd, 50V, Mica
C310	1-.01M50	Capacitor, 0.01 mfd, 50V, Ceramic
C311	2-30P50	Capacitor, 30 pfd, 50V, Mica
C312	1-.01M50	Capacitor, 0.01 mfd, 50V, Ceramic
C313	1-.01M50	Capacitor, 0.01 mfd, 50V, Ceramic
C314	1-.01M50	Capacitor, 0.01 mfd, 50V, Ceramic
C315	2-20P50	Capacitor, 20 pfd, 50V, Mica
C316	1-.01M50	Capacitor, 0.01 mfd, 50V, Ceramic
C317	1-.001M50	Capacitor, 0.001 mfd, 50V, Ceramic
C318	1-.001M50	Capacitor, 0.001 mfd, 50V, Ceramic
C319	1-.001M50	Capacitor, 0.001 mfd, 50V, Ceramic
C320	4-4.7M50	Capacitor, 4.7 mfd, 50V, Electrolytic
C321	2-15P50	Capacitor, 15 pfd, 50V, Mica
C322	2-56P50	Capacitor, 56 pfd, 50V, Mica
C323	1-.01M50	Capacitor, 0.01 mfd, 50V, Ceramic
C324	1-.001M50	Capacitor, 0.001 mfd, 50V, Ceramic
C325	2-5P50	Capacitor, 5 pfd, 50V, Mica
C327	1-.01M50	Capacitor, 0.01 mfd, 50V, Ceramic
C328	1-.01M50	Capacitor, 0.01 mfd, 50V, Ceramic
C329	1-.01M50	Capacitor, 0.01 mfd, 50V, Ceramic

<b>SYMBOL #</b>	<b>PART #</b>	<b>DESCRIPTION</b>
C401	2-4.7P50	Capacitor, 4.7 pfd, 50V, Mica
C402	1-.01M50	Capacitor, 0.01 mfd, 50V, Ceramic
C403	4-1M50	Capacitor, 1 mfd, 50V, Electrolytic
C404	3-.1M50	Capacitor, 0.1 mfd, 50V, Mylar
C405	2-4.7P50	Capacitor, 4.7 pfd, 50V, Mica
C406	4-1M50	Capacitor, 1 mfd, 50V, Electrolytic
C407	4-10M16	Capacitor, 10 mfd, 16V, Electrolytic
C408	1-.01M50	Capacitor, 0.01 mfd, 50V, Ceramic
C410	4-1M16	Capacitor, 1 mfd, 16V, Electrolytic
C411	1-.01M50	Capacitor, 0.01 mfd, 50V, Ceramic
C412	1-.01M50	Capacitor, 0.01 mfd, 50V, Ceramic
C413	1-.001M50	Capacitor, 0.001 mfd, 50V, Ceramic
C501	2-220P50	Capacitor, 220 pfd, 50V, Mica
C502	2-500P50	Capacitor, 500 pfd, 50V, Mica
C503	1-.01M50	Capacitor, 0.01 mfd, 50V, Ceramic
C504	2-270P50	Capacitor, 270 pfd, 50V, Mica
C505	2-170P50	Capacitor, 170 pfd, 50V, Mica
C506	2-56P50	Capacitor, 56 pfd, 50V, Mica
C507	1-.01M50	Capacitor, 0.01 mfd, 50V, Ceramic
C508	1-.01M50	Capacitor, 0.01 mfd, 50V, Ceramic
C509	1-.01M50	Capacitor, 0.01 mfd, 50V, Ceramic
C510	4-22M16	Capacitor, 22 mfd, 16V, Electrolytic
C511	1-.01M50	Capacitor, 0.01 mfd, 50V, Ceramic
C512	2-150P50	Capacitor, 150 pfd, 50V, Mica
C513	2-35P50	Capacitor, 35 pfd, 50V, Mica
C514	1-.01M50	Capacitor, 0.01 mfd, 50V, Ceramic
C515	1-.01M50	Capacitor, 0.01 mfd, 50V, Ceramic
C516	1-.01M50	Capacitor, 0.01 mfd, 50V, Ceramic
C517	1-.01M50	Capacitor, 0.01 mfd, 50V, Ceramic
C518	2-270P50	Capacitor, 270 pfd, 50V, Mica
C519	2-130P50	Capacitor, 130 pfd, 50V, Mica
C520	1-.01M50	Capacitor, 0.01 mfd, 50V, Ceramic
C521	1-.01M50	Capacitor, 0.01 mfd, 50V, Ceramic
C522	2-100P50	Capacitor, 100 pfd, 50V, Mica
C523	1-.01M50	Capacitor, 0.01 mfd, 50V, Ceramic
C524	8000-00006-277	Capacitor, 1 pfd, 50V, Gimmic
C525	1-.01M50	Capacitor, 0.01 mfd, 50V, Ceramic
C527	2-2P50	Capacitor, 5 pfd, 50V, Mica
C528	2-130P50	Capacitor, 130 pfd, 50V, Mica
C529	2-100P50	Capacitor, 100 pfd, 50V, Mica
C530	2-100P50	Capacitor, 100 pfd, 50V, Mica
C531	2-56P50	Capacitor, 56 pfd, 50V, Mica
C532	2-47P50	Capacitor, 47 pfd, 50V, Mica
C601	4-1M50	Capacitor, 1 mfd, Electrolytic
C602	4-1M50	Capacitor, 1 mfd, Electrolytic
C603	4-10M16	Capacitor, 10 mfd, Electrolytic
C604	4-10M16	Capacitor, 10 mfd, Electrolytic
C605	4-1M50	Capacitor, 1 mfd, Electrolytic
C606	2-15P50	Capacitor, 15 pfd, 50V, Mica
C607	4-1M50	Capacitor, 1 mfd, Electrolytic
C608	1-.01M50	Capacitor, 0.01 mfd, 50V, Ceramic

<b>SYMBOL #</b>	<b>PART #</b>	<b>DESCRIPTION</b>
C609	4-47M50	Capacitor, 47 mfd, 50V, Electrolytic
C610	4-1M50	Capacitor, 1 mfd, 50V, Electrolytic
C611	4-10M50	Capacitor, 10 mfd, 50V, Electrolytic
C612	3-.04M50	Capacitor, 0.04 mfd, 50V, Mylar
C613	3-.1M50	Capacitor, 0.1 mfd, 50V, Mylar
C614	3-.015M50	Capacitor, 0.015 mfd, 50V, Mylar
C615	1-.001M50	Capacitor, 0.001 mfd, 50V, Ceramic
C616	4-47M16	Capacitor, 47 mfd, 16V, Electrolytic
C617	3-.03M50	Capacitor, 0.03 mfd, 50V, Mylar
C618	2-300P50	Capacitor, 300 pfd, 50V, Mica
C619	2-100P50	Capacitor, 100 pfd, 50V, Mica
C620	4-47M16	Capacitor, 47 mfd, 16V, Electrolytic
C621	8000-00047-015	Capacitor, 10 mfd, 10V, Tantal
C622	3-.1M50	Capacitor, 0.1 mfd, 50V, Mylar
C623	3-.1M50	Capacitor, 0.1 mfd, 50V, Mylar
C625	4-220M16	Capacitor, 220 mfd, 16V, Electrolytic
C626	1-.01M50	Capacitor, 0.01 mfd, 50V, Ceramic
C627	1-.01M50	Capacitor, 0.01 mfd, 50V, Ceramic
C701	4-1M50	Capacitor, 1 mfd, 50V, Electrolytic
C702	1-.01M50	Capacitor, 0.01 mfd, 50V, Ceramic
C703	1-.001M50	Capacitor, 0.001 mfd, 50V, Ceramic
C704	1-.001M50	Capacitor, 0.001 mfd, 50V, Ceramic
C705	4-10M16	Capacitor, 10 mfd, 16V, Electrolytic
C706	4-1M50	Capacitor, 1 mfd, 50V, Electrolytic
C707	1-.01M50	Capacitor, 0.01 mfd, 50V, Ceramic
C709	4-10M50	Capacitor, 10 mfd, 50V, Electrolytic
C710	1-.01M50	Capacitor, 0.01 mfd, 50V, Ceramic
C711	1-.01M50	Capacitor, 0.01 mfd, 50V, Ceramic
C712	1-.01M50	Capacitor, 0.01 mfd, 50V, Ceramic
C713	3-.04M50	Capacitor, 0.04 mfd, 50V, Mylar
C714	2-15P50	Capacitor, 15 pfd, 50V, Mica
C715	2-75P50	Capacitor, 75 pfd, 50V, Mica
C716	2-10P50	Capacitor, 10 pfd, 50V, Mica
C717	2-100P50	Capacitor, 100 pfd, 50V, Mica
C718	2-150P50	Capacitor, 150 pfd, 50V, Mica
C719	2-500P50	Capacitor, 500 pfd, 50V, Mica
C720	1-.01M50	Capacitor, 0.01 mfd, 50V, Ceramic
C721	1-.01M50	Capacitor, 0.01 mfd, 50V, Ceramic
C722	1-5P50-CH	Capacitor, 5 pfd, 50V, Ceramic (CH)
C723	1-.01M50	Capacitor, 0.01 mfd, 50V, Ceramic
C725	1-.01M50	Capacitor, 0.01 mfd, 50V, Ceramic
C726	3-.04M50	Capacitor, 0.04 mfd, 50V, Mylar
C727	4-1M50	Capacitor, 1 mfd, 50V, Electrolytic
C801	1-.01M50	Capacitor, 0.01 mfd, 50V, Ceramic
C802	4-1M50	Capacitor, 1 mfd, 50V, Electrolytic
C803	4-10M16	Capacitor, 10 mfd, 16V, Electrolytic
C804	4-4.7M16	Capacitor, 4.7 mfd, 16V, Electrolytic
C805	1-.01M50	Capacitor, 0.01 mfd, 50V, Ceramic
C806	4-10M16	Capacitor, 10 mfd, 16V, Electrolytic
C807	4-220M16	Capacitor, 220 mfd, 16V, Electrolytic
C808	4-220M16	Capacitor, 220 mfd, 16V, Electrolytic



<b>SYMBOL #</b>	<b>PART #</b>	<b>DESCRIPTION</b>
C809	4-2200M16	Capacitor, 2200 mfd, 16V, Electrolytic
C810	1-.01M50	Capacitor, 0.01 mfd, 50V, Ceramic
C811	8000-00004-048	Capacitor, 1000 pfd, feed through
C812	1-.01M50	Capacitor, 0.01 mfd, 50V, Ceramic
C813	8000-00051-009	Capacitor, 1 mfd, 25V, Tantal
C814	8000-00049-019	Capacitor, 3.3 mfd, 10V, Tantal
C815	8000-00049-019	Capacitor, 3.3 mfd, 10V, Tantal
C817	8000-00051-009	Capacitor, 1 mfd, 25V, Tantal
C818	4-47M16	Capacitor, 47 mfd, 16V, Electrolytic
C819	4-10M16	Capacitor, 10 mfd, 16V, Electrolytic
C820	4-10M16	Capacitor, 10 mfd, 16V, Electrolytic
C821	1-.01M50	Capacitor, 0.01 mfd, 50V, Ceramic
C822	2-10P50	Capacitor, 10 pfd, 50V, Mica
C901	4-220M16	Capacitor, 220 mfd, 16V, Electrolytic
C902	3-.04M50	Capacitor, 0.04 mfd, 50V, Mylar
C903	8000-00051-009	Capacitor, 1 mfd, 25V, Tantal
C904	8000-00051-010	Capacitor, 0.22 mfd, 35V, Tantal
C905	1-.01M50	Capacitor, 0.01 mfd, 50V, Ceramic
C906	2-24P50	Capacitor, 24 pfd, 50V, Mica
C907	1-22P50-UJ	Capacitor, 22 pfd, 50V, Ceramic(UJ)
C908	2-100P50	Capacitor, 100 pfd, 50V, Mica
C909	1-47P50-UJ	Capacitor, 47 pfd, 50V, Ceramic (UJ)
C910	2-5P50	Capacitor, 5 pfd, 50V, Mica
C911	3-.04M50	Capacitor, 0.04 mfd, 50V, Mylar
C912	1-.01M50	Capacitor, 0.01 mfd, 50V, Ceramic
C913	2-56P50	Capacitor, 56 pfd, 50V, Mica
C914	2-27P50	Capacitor, 27 pfd, 50V, Mica
C915	2-30P50	Capacitor, 30 pfd, 50V, Mica
C916	1-.001M50	Capacitor, 0.001 mfd, 50V, Ceramic
C917	3-.04M50	Capacitor, 0.04 mfd, 50V, Mylar
C918	2-1.5P50	Capacitor, 1.5 pfd, 50V, Mica
C919	2-5P50	Capacitor, 5 pfd, 50V, Mica
C920	1-.01M50	Capacitor, 0.01 mfd, 50V, Ceramic
C921	2-10P50	Capacitor, 10 pfd, 50V, Mica
C922	1-.01M50	Capacitor, 0.01 mfd, 50V, Ceramic
C923	3-.04M50	Capacitor, 0.04 mfd, 50V, Mylar
C924	1-.001M50	Capacitor, 0.001 mfd, 50V, Ceramic
C925	1-.001M50	Capacitor, 0.001 mfd, 50V, Ceramic
C926	1-22P50-UJ	Capacitor, 22 pfd, 50V, Ceramic (UJ)
C927	8000-00047-021	Capacitor, 22 mfd, 16V, Tantal
C928	1-.001M50	Capacitor, 0.001 mfd, 50V, Ceramic
C929	1-.01M50	Capacitor, 0.01 mfd, 50V, Ceramic
C930	2-330P50	Capacitor, 330 pfd, 50V, Mica
C931	2-150P50	Capacitor, 150 pfd, 50V, Mica
C932	1-.01M50	Capacitor, 0.01 mfd, 50V, Ceramic
C933	8000-00051-010	Capacitor, 0.22 mfd, 35V, Tantal
C934	1-.001M50	Capacitor, 0.001 mfd, 50V, Ceramic
C936	1-.01M50	Capacitor, 0.01 mfd, 50V, Ceramic
C937	2-150P50	Capacitor, 150 pfd, 50V, Mica
CV101	8000-00004-204	Capacitor, Variable, 10 pfd, Trimmer
CV701	8000-00004-204	Capacitor, Variable, 10 pfd, Trimmer

<b>SYMBOL #</b>	<b>PART #</b>	<b>DESCRIPTION</b>
D1	8000-00051-003	Diode, WZ061
D2	8000-00042-007	Diode, 1N4448
D3	8000-00042-007	Diode, 1N4448
D101	8000-00047-035	Diode, MI301
D102	8000-00047-035	Diode, MI301
D103	8000-00006-007	Diode, 1N60
D104	8000-00006-007	Diode, 1N60
D105	8000-00006-007	Diode, 1N60
D201	8000-00006-007	Diode, 1N60
D202	8000-00006-007	Diode, 1N60
D203	8000-00042-007	Diode, 1N4448
D204	8000-00042-007	Diode, 1N4448
D205	8000-00042-007	Diode, 1N4448
D206	8000-00006-007	Diode, 1N60
D207	8000-00006-007	Diode, 1N60
D208	8000-00004-060	Diode, 1N34A
D209	8000-00042-007	Diode, 1N4448
D210	8000-00042-007	Diode, 1N4448
D301	8000-00042-007	Diode, 1N4448
D302	8000-00042-007	Diode, 1N4448
D303	8000-00042-007	Diode, 1N4448
D304	8000-00042-007	Diode, 1N4448
D305	8000-00042-007	Diode, 1N4448
D306	8000-00004-060	Diode, 1N34A
D307	8000-00004-060	Diode, 1N34A
D308	8000-00006-007	Diode, 1N60
D309	8000-00004-060	Diode, 1N34A
D310	8000-00042-007	Diode, 1N4448
D311	8000-00042-007	Diode, 1N4448
D401	8000-00042-007	Diode, 1N4448
D402	8000-00006-007	Diode, 1N60
D403	8000-00042-007	Diode, 1N4448
D404	8000-00042-007	Diode, 1N4448
D405	8000-00042-007	Diode, 1N4448
D406	8000-00006-007	Diode, 1N60
D501	8000-00004-184	Diode, 1S990
D502	8000-00004-184	Diode, 1S990
D503	8000-00004-184	Diode, 1S990
D601	8000-00042-007	Diode, 1N4448
D602	8000-00042-007	Diode, 1N4448
D603	8000-00042-007	Diode, 1N4448
D604	8000-00042-007	Diode, 1N4448
D701	8000-00004-060	Diode, 1N34A
D702	8000-00042-007	Diode, 1N4448
D703	8000-00042-007	Diode, 1N4448
D704	8000-00042-007	Diode, 1N4448
D705	8000-00042-007	Diode, 1N4448



<b>SYMBOL #</b>	<b>PART #</b>	<b>DESCRIPTION</b>
D801	8000-00004-060	Diode, 1N34A
D802	8000-00051-002	Diode, BZ100
D803	8000-00011-105	Diode, U05B
D804	8000-00042-007	Diode, 1N4448
D805	8000-00042-007	Diode, 1N4448
D806	8000-00042-007	Diode, 1N4448
D807	8000-00051-003	Diode, WZ061
D808	8000-00042-007	Diode, 1N4448
D809	8000-00042-007	Diode, 1N4448
D810	8000-00042-007	Diode, 1N4448
D901	8000-00042-007	Diode, 1N4448
D902	8000-00038-010	Diode, MV201
D903	8000-00011-166	Diode, 1S2688
D904	8000-00042-007	Diode, 1N4448
DS-1	8000-00051-045	LED for channel display
DS-2	8000-00051-045	LED for channel display
F801	8000-00011-157	Fuse, 4A
FL-1	8000-00011-071	Filter, crystal, 7.8 MHz
IC1	8000-00045-004	Integrated Circuit, SL-1626
IC301	8000-00047-005	Integrated Circuit, CA3012
IC601	8000-00047-004	Integrated Circuit, HA1339
IC701	8000-00047-001	Integrated Circuit, SL1640
IC801	8000-00038-004	Integrated Circuit, 7400
IC802	8000-00038-004	Integrated Circuit, 7400
IC803	8000-00051-001	Integrated Circuit, M-58476
IC804	8000-00042-053	Integrated Circuit, 7447
IC805	8000-00042-053	Integrated Circuit, 7447
IC901	8000-00047-002	Integrated Circuit, MC14568
IC902	8000-00047-003	Integrated Circuit, MC14526
IC903	8000-00040-011	Integrated Circuit, SN7490
IC904	8000-00038-007	Integrated Circuit, SN7474
IC905	8000-00047-006	Integrated Circuit, 78L06AC
J1	8000-00004-069	Antenna Jack
J2	8000-00004-070	Microphone Jack
J3	8000-00030-021	Ext. speaker Jack
J4	8000-00030-021	PA speaker Jack
L1	8000-00045-019	Choke, K-69
L2	8000-00045-019	Choke, K-69
L101	8000-00004-055	Choke, 0.75 $\mu$ H
L102	8000-00011-016	Choke, 0.22 $\mu$ H
L103	8000-00047-024	Choke, C366Z
L201	8000-00004-053	Choke, 22 $\mu$ H

<b>SYMBOL #</b>	<b>PART #</b>	<b>DESCRIPTION</b>
L202	8000-00011-019	Choke
L203	8000-00011-019	Choke
L301	8000-00047-026	Choke, Z542R
L302	8000-00011-019	Choke, 22 $\mu$ H
L501	8000-00047-027	Choke, C997N
L502	8000-00004-075	Choke, C043N
L503	8000-00011-016	Choke, 0.22 $\mu$ H
L504	8000-00040-029	Choke, 1.2 $\mu$ H
L505	8000-00051-021	Choke, C996N
L506	8000-00004-055	Choke, 0.65 $\mu$ H
L507	8000-00047-028	Choke, C813N
L508	8000-00004-055	Choke, 0.65 $\mu$ H
L509	8000-00051-022	Choke, Z392
L601	8000-00011-019	Choke, 22 $\mu$ H
L602	8000-00006-284	Choke, K-58
L603	8000-00051-023	Choke, 3.9 mH
L701	8000-00011-019	Choke, 22 $\mu$ H
L702	8000-00011-019	Choke, 22 $\mu$ H
L703	8000-00047-029	Choke, Y372N
L801	8000-00011-035	Choke, Z177
L802	8000-00030-012	Choke, K-10
L901	8000-00051-024	Choke, Z383
L902	8000-00051-025	Choke, Z354
L903	8000-00051-026	Choke, 33 $\mu$ H
L904	8000-00051-027	Choke, Y370N
L905	8000-00051-028	Choke, Y369N
L906	8000-00011-018	Choke, 150 $\mu$ H
LED-1	8000-00055-009	LED, TX Lamp
LED-2	8000-00055-010	LED, RX Lamp
M1	8000-00030-029	Meter, A-36
PL-1	8000-00011-056	Lamp, 14V, 80MA
Q1	8000-00011-047	Transistor, 2SC710C
Q101	8000-00011-053	Transistor, 3SK41L
Q102	8000-00050-017	Transistor, 2SK41F
Q103	8000-00011-047	Transistor, 2SC710C
Q201	8000-00011-047	Transistor, 2SC710C
Q202	8000-00011-047	Transistor, 2SC710C
Q203	8000-00011-047	Transistor, 2SC710C
Q204	8000-00011-047	Transistor, 2SC710C
Q301	8000-00011-047	Transistor, 2SC710C

<b>SYMBOL #</b>	<b>PART #</b>	<b>DESCRIPTION</b>
Q302	8000-00011-047	Transistor, 2SC710C
Q303	8000-00011-047	Transistor, 2SC710C
Q304	8000-00050-017	Transistor, 2SK41F
Q305	8000-00011-047	Transistor, 2SC710C
Q401	8000-00011-055	Transistor, 2SK34E
Q402	8000-00011-047	Transistor, 2SC710C
Q403	8000-00011-047	Transistor, 2SC710C
Q404	8000-00011-047	Transistor, 2SC710C
Q405	8000-00011-047	Transistor, 2SC710C
Q406	8000-00011-047	Transistor, 2SC710C
Q501	8000-00047-032	Transistor, 2SC1969 or 2SC1307
Q502	8000-00047-033	Transistor, 2SC2146 or 2SC1306
Q503	8000-00047-034	Transistor, 2SC1449
Q504	8000-00011-047	Transistor, 2SC710C
Q505	8000-00011-053	Transistor, 3SK41L
Q601	8000-00030-009	Transistor, 2SK187
Q602	8000-00011-050	Transistor, 2SC1061
Q701	8000-00047-054	Transistor, 2SK40C
Q702	8000-00030-009	Transistor, 2SK187
Q703	8000-00032-025	Transistor, 2SC372Y
Q704	8000-00011-047	Transistor, 2SC710C
Q705	8000-00011-047	Transistor, 2SC710C
Q706	8000-00011-047	Transistor, 2SC710C
Q707	8000-00011-047	Transistor, 2SC710C
Q801	8000-00011-047	Transistor, 2SC710C
Q802	8000-00011-047	Transistor, 2SC710C
Q803	8000-00004-087	Transistor, 2SC1014
Q804	8000-00004-087	Transistor, 2SC1014
Q805	8000-00011-047	Transistor, 2SC710C
Q806	8000-00011-047	Transistor, 2SC710C
Q901	8000-00011-047	Transistor, 2SC710C
Q902	8000-00011-047	Transistor, 2SC710C
Q903	8000-00011-047	Transistor, 2SC710C
Q904	8000-00011-047	Transistor, 2SC710C
Q905	8000-00011-047	Transistor, 2SC710C
Q906	8000-00011-047	Transistor, 2SC710C
Q907	8000-00011-047	Transistor, 2SC710C
Q908	8000-00047-055	Transistor, 2SA844D
Q909	8000-00011-047	Transistor, 2SC710C
Q910	8000-00011-047	Transistor, 2SC710C
Q911	8000-00011-053	Transistor, 3SK41L
R503	8000-00051-011	Resistor, 100 $\Omega$ , 2W, Metal oxide
R807	8000-00032-005	Resistor, 150 $\Omega$ , 1W, Metal Oxide
R833	8000-00051-012	Resistor, 4 $\Omega$ , 1W, Metal Oxide
RL-1	8000-00004-141	Relay, MY40

<b>SYMBOL #</b>	<b>PART #</b>	<b>DESCRIPTION</b>
S1	8000-00004-102	Mode Selector Switch
S2	8000-00038-032	Slide Switch
S3	8000-00038-032	Slide Switch
S4	8000-00038-032	Slide Switch
S5	8000-00051-033	Channel Selector
S6	8000-00055-011	Push Switch
S7	8000-00055-011	Push Switch
S8	8000-00011-005	Resistor, Variable, 5KA-10KD, On/Off Control
SP-1	8000-00038-036	Speaker
T101	8000-00047-030	Transformer, C193I
T102	8000-00047-030	Transformer, C193I
T103	8000-00011-029	Transformer, S183A
T104	8000-00011-029	Transformer, S183A
T201	8000-00011-029	Transformer, S183A
T202	8000-00011-029	Transformer, S183A
T203	8000-00011-030	Transformer, S190A
T301	8000-00037-004	Transformer, C544N
T302	8000-00037-001	Transformer, C541N
T303	8000-00037-003	Transformer, Z543Q
T304	8000-00037-005	Transformer, S518A
T401	8000-00011-031	Transformer, Z185Z
T501	8000-00004-118	Transformer, C042D
T502	8000-00011-036	Transformer, C182Z
T503	8000-00011-037	Transformer, C181Z
T901	8000-00011-035	Transformer, Z177
VR1	8000-00004-096	Resistor, Variable, 10K $\Omega$ , 2T
VR2	8000-00051-020	Resistor, Variable, 1K $\Omega$ , 3T
VR101	8000-00011-005	Resistor, Variable, 5KA-10KD, On/Off Control
VR201	8000-00004-096	Resistor, Variable, 10K $\Omega$ , 2T
VR301	8000-00004-094	Resistor, Variable, 100K $\Omega$ , 2T
VR302	8000-00006-047	Resistor, Variable, 10K $\Omega$ , 3T
VR401	8000-00004-096	Resistor, Variable, 10K $\Omega$ , 2T
VR402	8000-00051-019	Resistor, Variable, 5K $\Omega$ , 2T
VR403	8000-00004-256	Resistor, Variable, 10KB x 2, RF Gain/Clarifier
VR601	8000-00011-005	Resistor, Variable, 5KA-10KD, On/Off Control
VR701	8000-00006-047	Resistor, Variable, 10K $\Omega$ , 3T
VR702	8000-00004-094	Resistor, Variable, 100K $\Omega$ , 2T
VR801	8000-00006-045	Resistor, Variable, 20K $\Omega$ , 3T
VR802	8000-00004-256	Resistor, Variable, 10KB x 2, RF Gain/Clarifier
X701	8000-00051-029	Crystal, 10.000 MHz
X702	8000-00051-030	Crystal, 7.8015 MHz

**SYMBOL #****PART #****DESCRIPTION****MISCELLANEOUS**

8000-00041-091	Ext. and PA speaker Plug
8000-00045-031	Bushing 3.5
8000-00051-034	Main PCB
8000-00055-001	PLL unit PCB
8000-00051-040	Mic compressor unit PCB
8000-00030-054	Washer, Mounting Bracket
8000-00038-028	Mounting Bracket
8000-00030-023	Feed thru capacitor mounting plate
8000-00051-067	Shield case of cover for PLL unit
8000-00051-068	Shield case for PLL unit
8000-00047-042	Shield case for VFO
8000-00047-043	Shield case of cover for VFO
8000-00051-069	Shield Plate, large
8000-00051-070	Shield Plate, small
8000-00004-153	Microphone
8000-00004-157	Mic hanger
8000-00055-002	Plate filter
8000-00038-039	Rubber support for lamp
8000-00055-003	Rubber support for wire
8000-00045-040	Rubber Bushing, orange
8000-00045-030	Moltplant
8000-00055-004	Paper Insulation
8000-00055-005	Paper Insulation
8000-00055-006	Scan/Off Button
8000-00051-059	Knob, Channel
8000-00055-007	Knob, RF Gain/Clarifier
8000-00055-008	LED, PCB
8000-00030-047	Fuse Holder
8000-00030-031	Cord stopper
8000-00055-012	Nylon rivet
8000-00045-027	Main chassis
8000-00047-038	Speaker Mount
8000-00055-013	LED Mount
8000-00042-030	Meter Mount
8000-00055-014	Trimmer Mount
8000-00055-015	Heat sink, 64
8000-00047-047	Heat sink, 65
8000-00055-016	Knob, Mode
8000-00055-017	Knob, Volume/Squelch
8000-00055-018	Front Bezel
8000-00055-019	Channel window
8000-00055-020	Front Panel
8000-00038-025	Cabinet
8000-00011-091	Rubber support for speaker
8000-00055-021	Plate, FCC
8000-00038-040	Styrofoam Box
8000-00055-022	Display Box

## **FCC LICENSE**

The SBE-39CB SIDEBANDER V transceiver is type accepted by the Federal Communications Commission for operation on any of the 40 Citizens Band channels. You are required to read and understand Part 95 of the F.C.C. regulations prior to operation of this unit. A copy of 95 is enclosed.

You must obtain a Class D station license before transmitting. If you do not have a license, obtain one with the enclosed application Form 505. You may operate under a temporary permit for 60 days after the Form 505 is mailed to the F.C.C. provided that you complete and comply with the enclosed Temporary Permit, Form 555-B.

**WARNING: Transmitter section adjustments must be performed by a qualified technician holding a valid First or Second class F.C.C. radiotelephone license.**

**The use of substitute components in the transmitter section of this equipment may cause a violation of F.C.C. rules and regulations. Use only the exact replacement parts specified in the parts list with this instruction manual.**

## LIMITED WARRANTY

SBE, Inc. warranty equipment manufactured by it to be free from defects in material or workmanship and agrees to repair or, at the option of the manufacturer, to replace such equipment which, under normal use and service, develops arising from the fault of the manufacturer (and existing at the date of original purchase). Equipment must be returned to the manufacturer or to one of the Certified Service Stations, transportation prepaid, at the address set forth below, within one year from the date of original purchase. Unless the warranty card has been filled in and returned within ten days of original purchase, this warranty shall be void.

This warranty does not apply to equipment which (1) has been repaired or altered by anyone in any way so as, in our judgment, to injure its stability or reliability, (2) has been subject to misuse, negligence, or accident, (3) has had the serial number altered, defaced or removed, or (4) has been connected, installed, adjusted other than in accordance with our written instructions.

The foregoing is in lieu of any other express warranty. ANY IMPLIED OR STATUTORY WARRANTIES, INCLUDING ANY WARRANTY OF MERCHANTABILITY APPLICABLE TO EQUIPMENT MANUFACTURED BY SBE, INC. SHALL EXIST FOR THE LESSER OF ONE YEAR OR THE DURATION OF THE EXPRESS WARRANTY HEREIN. In no event shall SBE, Inc. be liable for incidental or consequential damages.

Some states do not allow either limitations on how long an implied warranty lasts or the exclusion or limitation of incidental or consequential damages, so the above limitations and exclusions may not apply to you.

This warranty gives you specific legal rights, and you may also have other rights which vary from state to state.

SBE, Inc., neither assumes nor authorizes any person to assume for it any other obligation or liability in connection with this equipment.

SBE, Inc.  
220 Airport Boulevard  
Watsonville, California 95076  
(408) 722-4177

We recommend that you record the following information at the time you purchase your Sidebander V. If your unit becomes damaged or lost, this information may then be supplied to your insurance company and/or the local police department.

- |                          |                        |
|--------------------------|------------------------|
| 1. Model Number _____    | 4. Dealer's Name _____ |
| 2. Serial Number * _____ | 5. City _____          |
| 3. Date Purchased _____  | 6. State _____         |

\*Permanent number on case of radio.



