

**This Manual is provided by**  
**CBTricks.com**

Someone who wanted to help you repair your equipment  
scanned this manual.

If you would like to help us put more manuals online support us.

Supporters of CBTricks.com paid for the hosting so you would have this file.

CBTricks.com is a non-commercial personal website was created to help promote the exchange of service, modification, technically oriented information, and historical information aimed at the Citizens Band, GMRS (CB "A" Band), MURS, Amateur Radios and RF Amps.

CBTricks.com is not sponsored by or connected to any Retailer, Radio, Antenna Manufacturer or Amp Manufacturer, or affiliated with any site links shown in the links database. The use of product or company names on my web site is not endorsement of that product or company.

If your company would like to provide technical information to be featured on this site I will put up on the site as long as I can do it in a non-commercial way.

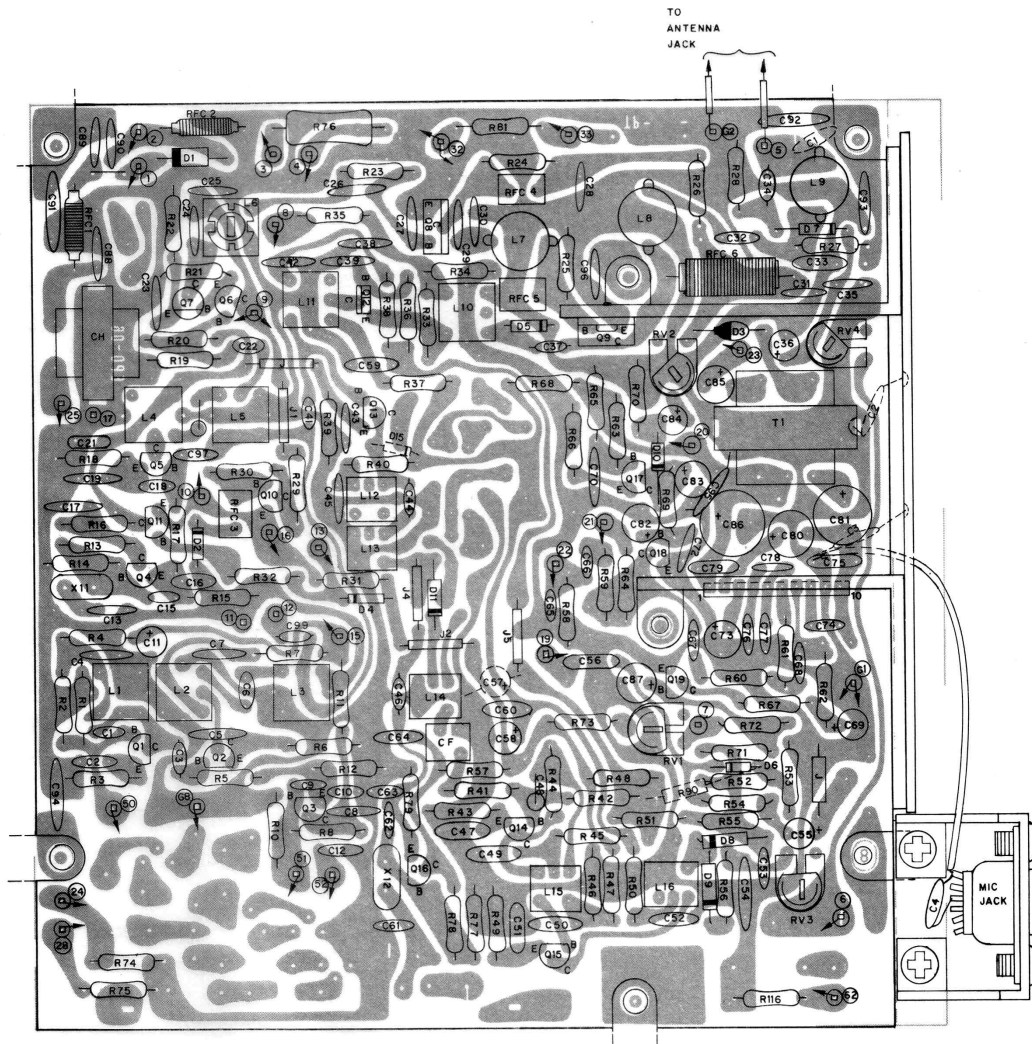
The site is supported with donation from users, friends and selling of the Galaxy Service Manual CD to cover some of the costs of having this website on the Internet instead of relying on banner ads, pop-up ads, commercial links, etc. to pay my costs. Thus I do not accept advertising banners or pop-up/pop-under advertising or other marketing/sales links or gimmicks on my website.

ALL the money from donations is used for CBTricks.com I didn't do all the work to make money (I have a day job). I all didn't do all this work for someone else to make money also, for example the ebay CD sellers.

All Trademarks, Logos, and Brand Names are the property of their respective owners.  
This information is not provided by, or affiliated in any way with any radio or antenna Manufacturers.  
Thank you for any support you can give.

Main P.C. Board



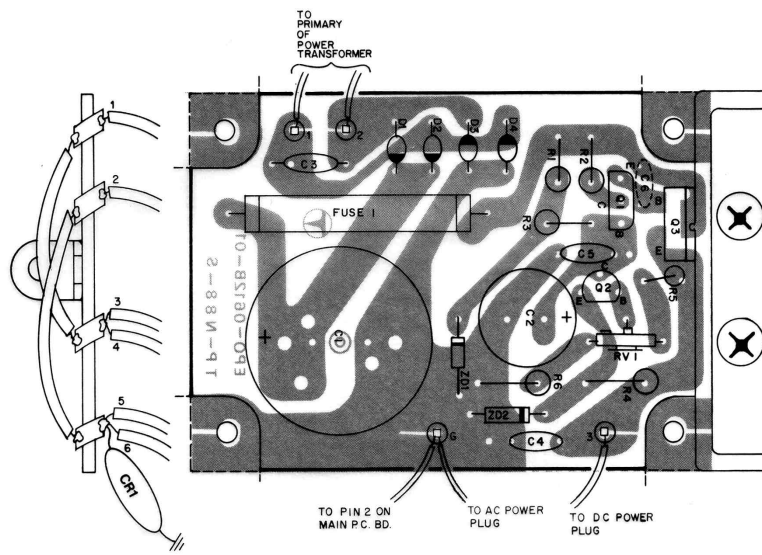


- NOTES:
1. P.C. Board shown as viewed from component side.
  2. Dashed outline component - mounted on foil side.

Figure 4-1. Component Outline, Main P.C. Board



**Power Supply P.C. Board Component Outline**



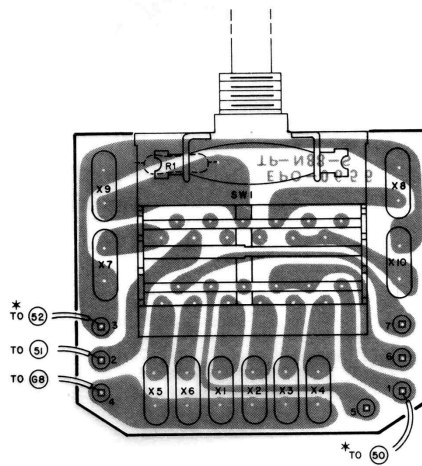
**NOTES:**

1. P.C. Board shown as viewed from component side.
2. Dashed outline component - mounted on foil side.

**Figure 4-2. Component Outline, Power Supply P.C. Board**



**Crystal P.C. Board**



- NOTE:**
1. P.C. Board shown as viewed from component side.
  2. Dashed outline component - mounted on foil side.
  3. R1 mounted under switch.
  4. \* -to main p.c. board.

**Figure 4-3. Component Outline, Crystal P.C. Board**