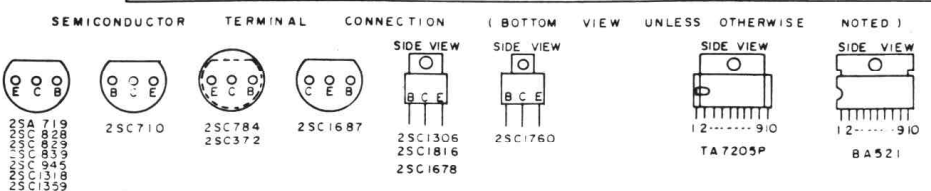


NOTE:  
 Δ VOLTS AT TRANSMIT CONDITION  
 ALL VOLTAGES MEASURED FROM COMMON NEGATIVE CHASSIS GND WITH D.C. VTVM AT NO SIGNAL (AT 12.6V POWER SUPPLY) IF MEASUREMENTS OBTAINED ARE IN EXCESS OF ± 20% OF VALUES SHOWN THEN REASON FOR DIFFERENCE SHOULD BE CORRECTED  
 ⊕ CHASSIS GND ⊖ BATTERY NEGATIVE  
 \* VARIABLE



E: EMITTER  
 C: COLLECTOR  
 B: BASE