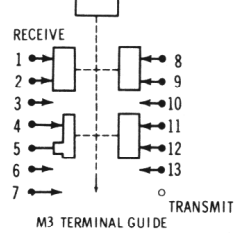


▲ TAKEN WITH RECEIVE-TRANSMIT SWITCH IN "TRANSMIT" POSITION.
 RESISTANCE MEASUREMENTS NOT GIVEN BECAUSE OF THE WIDE VARIATION IN INTERNAL TRANSISTOR RESISTANCE.

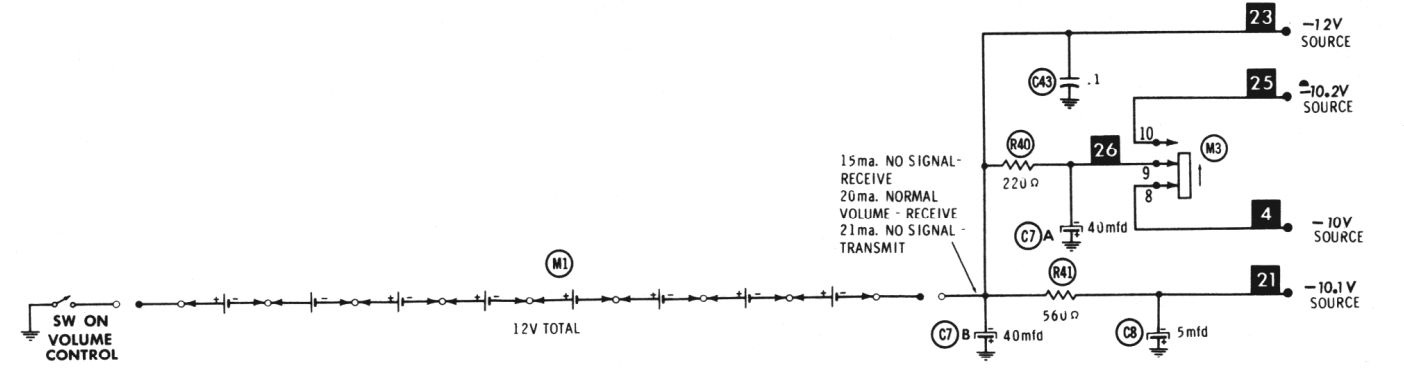


NUMBERS ASSIGNED TO COILS, SWITCHES, PLUGS, SOCKETS, AND TRANSFORMERS ARE TO FACILITATE CIRCUIT TRACING OR COMPONENT REPLACEMENT AND MAY NOT NECESSARILY BE FOUND ON THE UNIT.

- SEE PARTS LIST FOR ALTERNATE VALUE OR APPLICATION
- DC COIL RESISTANCE VALUES UNDER ONE OHM NOT SHOWN ON SCHEMATIC DIAGRAM
- 1. DC voltage measurements taken with vacuum tube voltmeter.
- 2. Socket connections or transistor terminals are shown as bottom views.
- 3. Measured values are from socket pin or terminal to common ground.
- 4. Nominal tolerance on component values makes possible a variation of ±15% in voltage and resistance readings.
- 5. Volume control at maximum, no signal applied for voltage measurements.

A PHOTOFACIT STANDARD NOTATION SCHEMATIC with **CIRCUITRACE**

© Howard W. Sams & Co., Inc. 1962



15 ma. NO SIGNAL - RECEIVE
 20 ma. NORMAL VOLUME - RECEIVE
 21 ma. NO SIGNAL - TRANSMIT