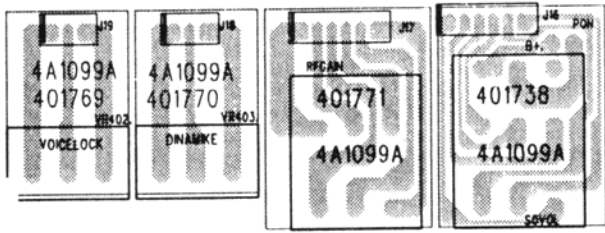
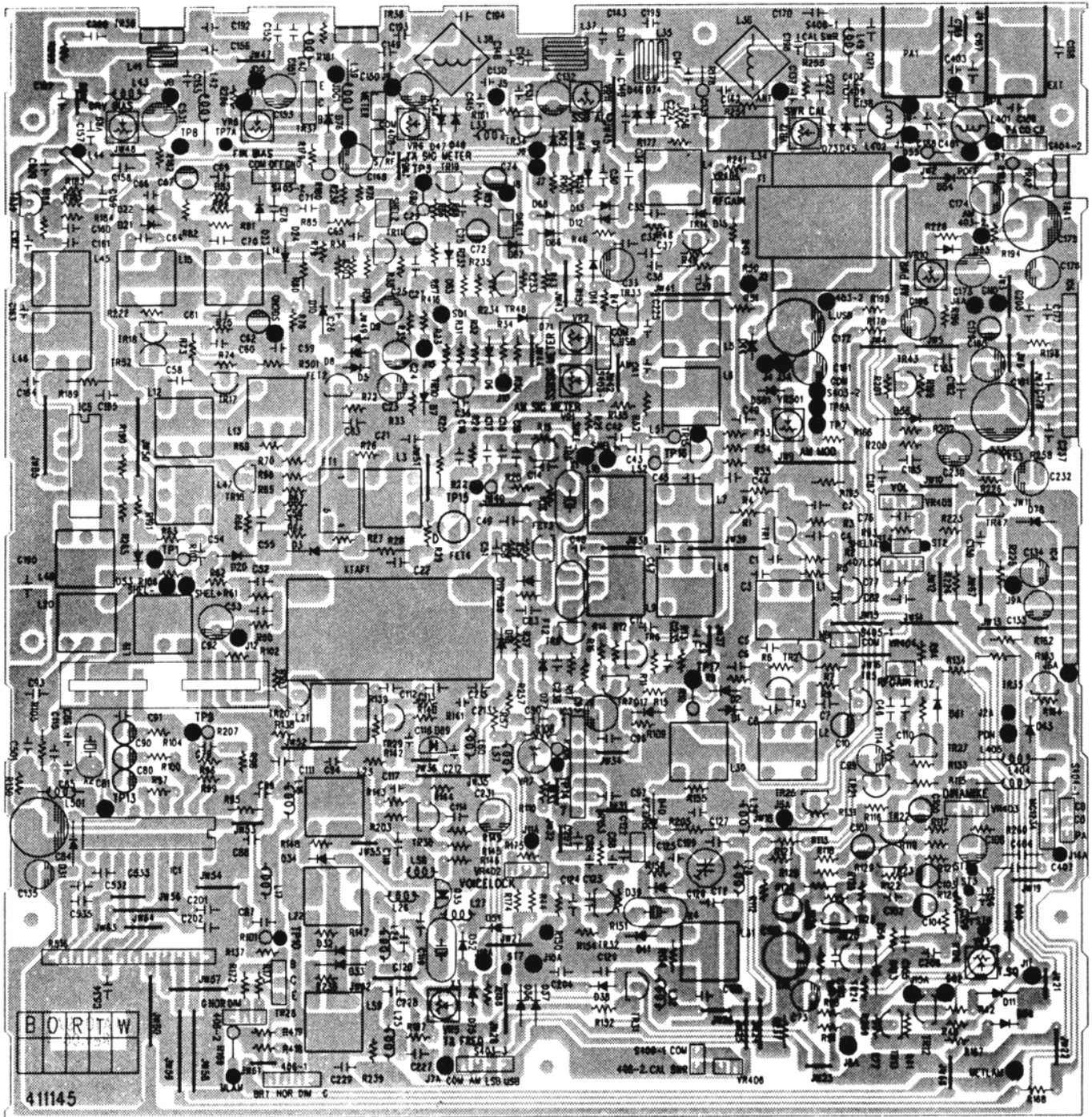
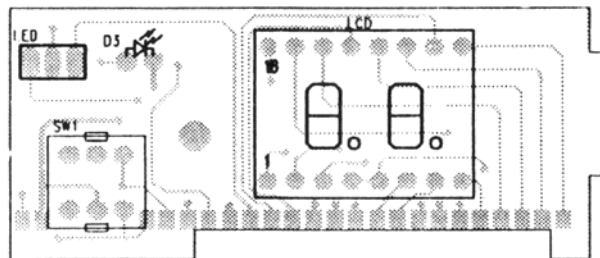
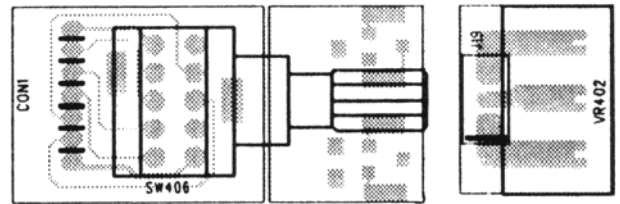
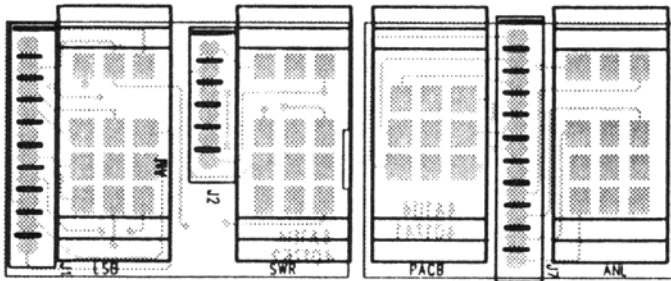
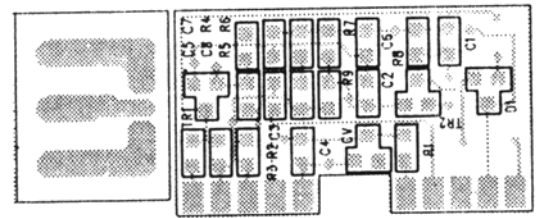
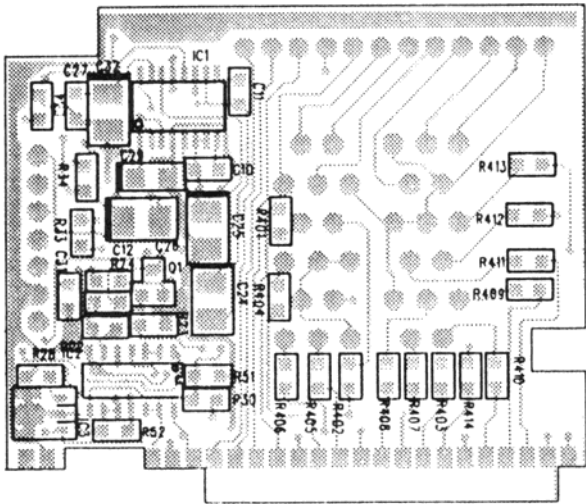
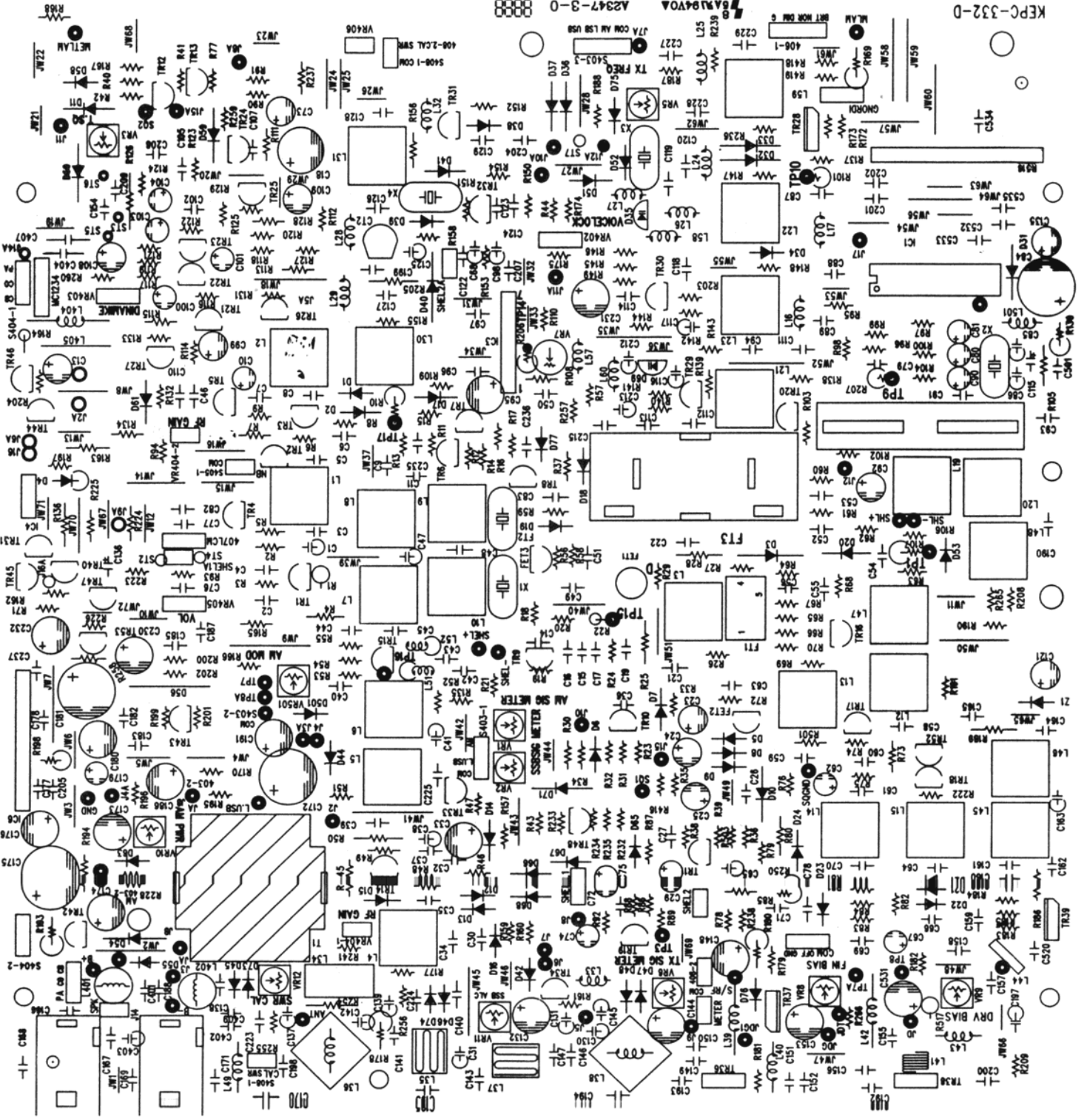


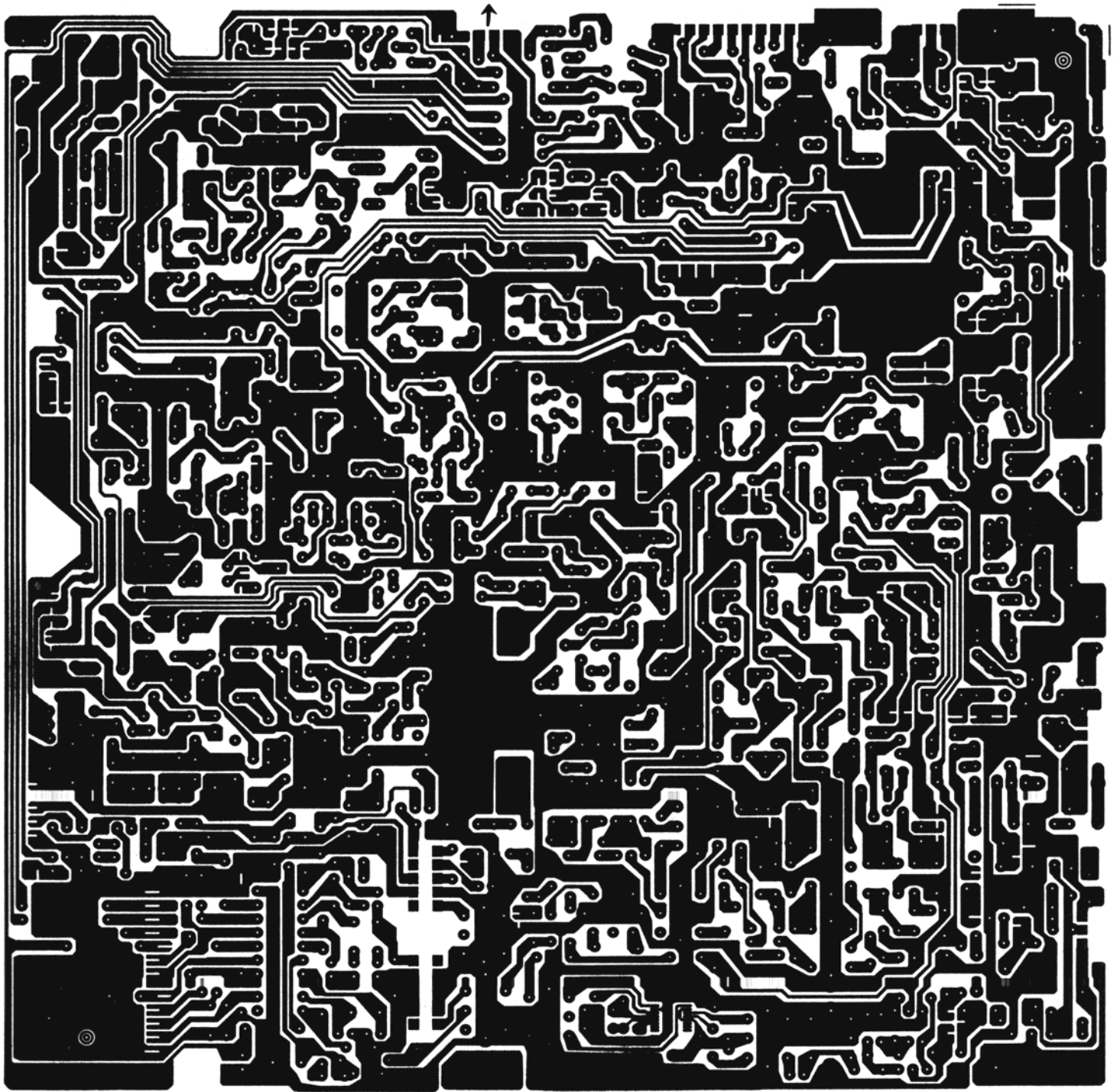
BOTTOM VIEW OF PCB BOARD



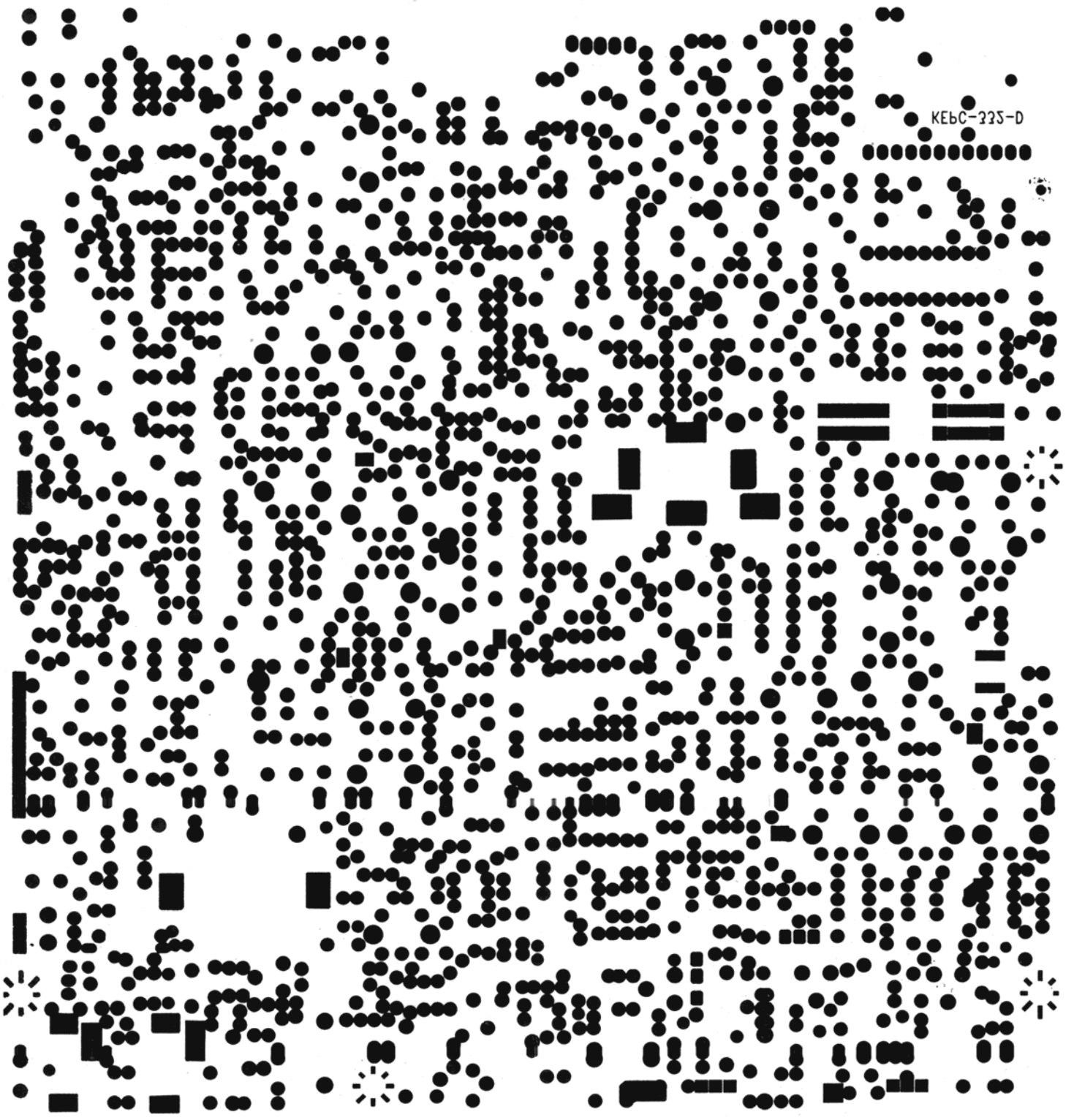


Issue No. AA(05/15/98) 148 GTL ST

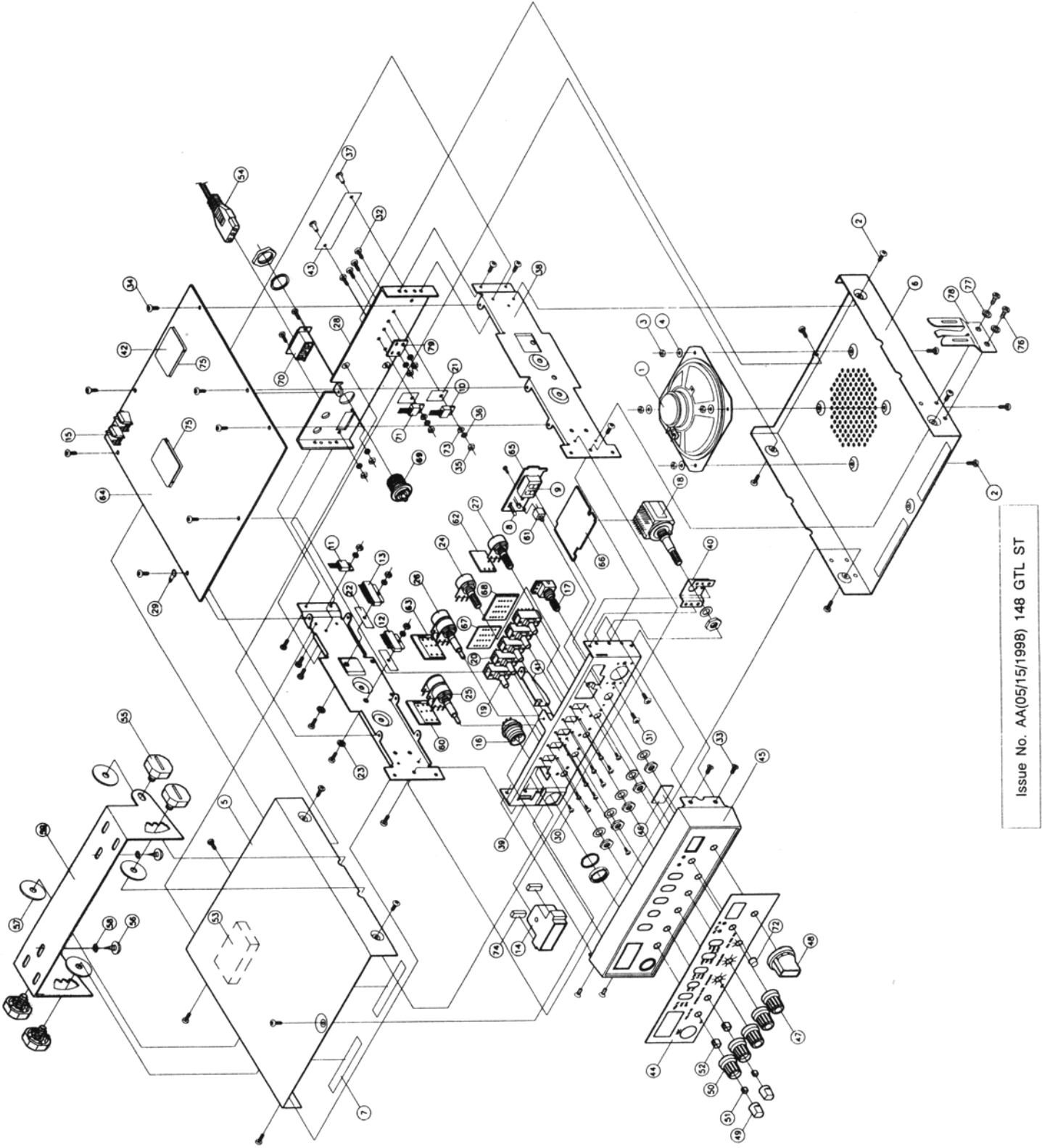




КЕбС-225-D



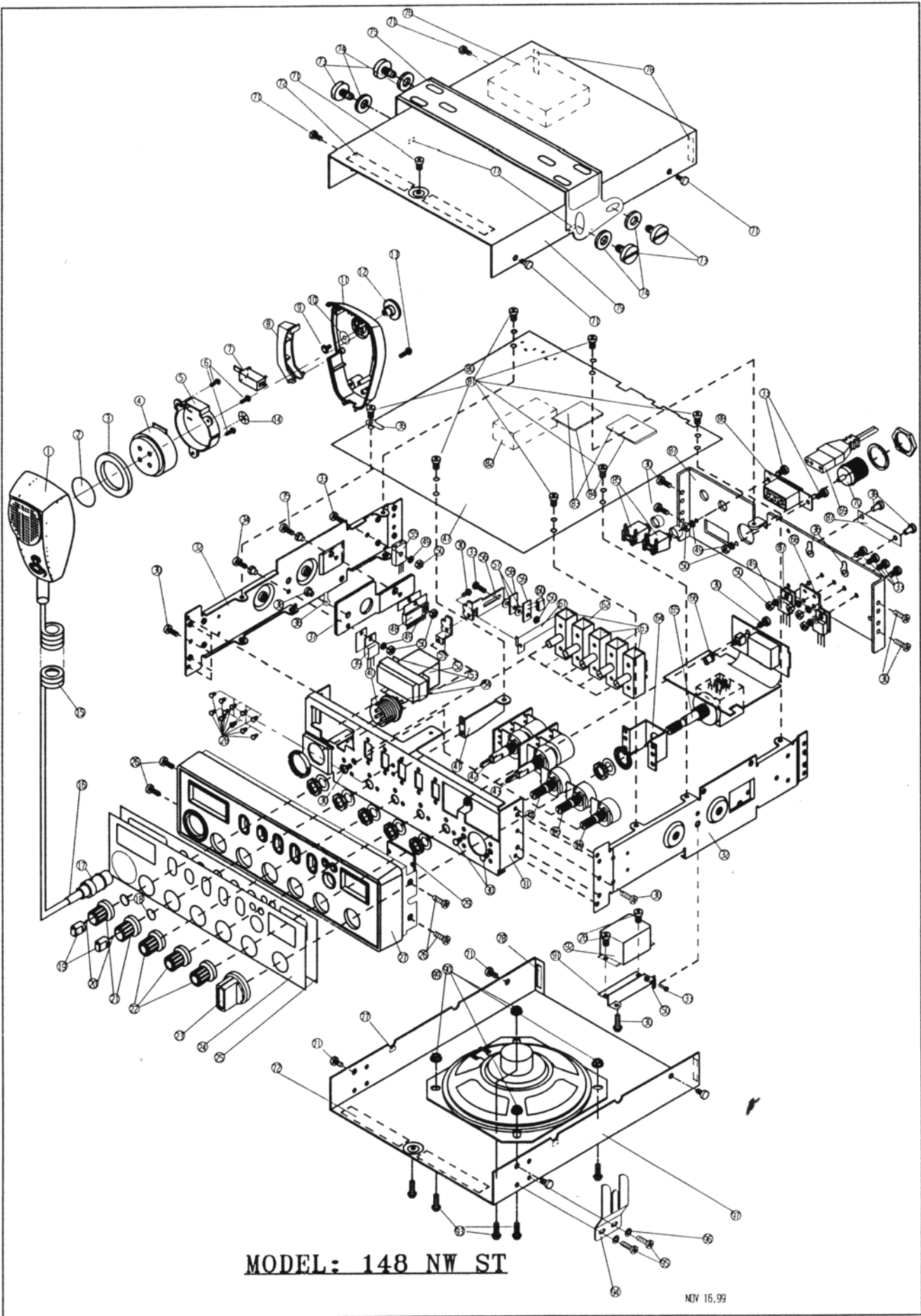
EXPLODED VIEW AND EXPLODED VIEW PARTS LIST



Issue No. AA(05/15/1998) 148 GTL ST

NO.	PART NO.	PART NAME & DESCRIPTION	Q'TY
1	420-118-9	Speaker FS-092-A6812	1.000
2	633-082	(+)Taptite Screw BH3X6 BLK	16.000
3	651-024	Nut SS41 M3-1S Zn-Plat	4.00
4	660-457	Washer Flat 3.2X8	4.00
5	719-415	Cover Upper SPC+Vinyl Sheet t0.95 BLK	1.000
6	729-416	Cover Bottom SPC+Vinyl Sheet t0.95 BLK	1.000
7	905-340	Felt 10X65Xt0.5 Felt BLK STIC.	4.000
8	251-168-1	LED Lamp SPR-39MVW3 (RED/GRN) 3V	1.000
9	252-172-9	LED Display LTD-482PC-Y5 RED	1.000
10	200-159-3	Transistor 2SC2166(C)	1.000
11	202-101-0	Transistor KTC4369Y	3.000
12	229-074-0	I.C MB3756 Regulation	1.000
13	222-006-4	I.C KTA721AP	1.000
14	420-051-5A	Analog Meter H-319-8456	1.000
15	420-705-1	Jack Earphone DHJ-3T	2.000
16	421-559-4A	Connector SCN-16-4 PCB(R)	1.000
17	430-080-5	Rotary Switch CRS-0323-20SP	1.000
18	430-081-6	Rotary Switch GPS-0739	1.000
19	431-121-4Z	SW Slide CSS-3301M(CAP)	4.000
20	431-232-1A	SW Slide CSS-3301K(CAP)	1.000
21	440-044-0	Mica (For TR KTC2078)	2.000
22	440-010-5	Mica (For I.C KIA7217AP)	2.000
23	441-010-0	Bushing (For I.C KIA7217AP)	2.000
24	450-656-3	VR 1KA CSPN-1602-20SP-A	1.000
25	450-652-9	VR B5KOHM B1KOM	1.000
26	450-653-0	VR B5K B1K CSPN 1651-30FP	1.000
27	450-654-1	VR 20KB:RK1631150Z0B	1.000
28	702-449	Rear Panel ALP3 t0.2	1.000
29	750-215	Luge Terminal SS34 18X9Xt0.3 Ni-P	1.000
30	611-110	(+)Machine Screw(BH) 2.6X4 BLK	11.000
31	613-323	(+)Machine Screw(BH) 3X8 Ni-Plat	16.000
32	613-466	(+)Machine Screw(BH) 3X10 Ni-Plat	2.000
33	613-540	(+)Machine Screw(FH) 3X8 Ni-Plat	5.000
34	623-265	(+)Tapping Screw(BH) 3X6-2S Zn-Plat	6.000
35	651-024	Nut M3-1S SS41 Zn-Plat	9.000
36	662-305	Washer(Spring) M3 Zn-Plat	9.000
37	670-025	Rivet Blind ALB \varnothing 3.2 ALB	2.000
38	702-450	Body Main EGI t1.0 Uscoating	2.000
39	702-451-AA	Body Front EGI t1.0 Uscoating	1.000
40	723-918	Bracket (Front MTG) EGI t1.0 Uscoating	1.000
41	732-924	Holder (For MTG) EGI t1.0 Uscoating	1.000
42	771-810-A	Shield Plate SPTE t0.3	2.000
43	795-685-P	Name Plate ALP3 70X18Xt0.4	1.000
44	795-771-AA	Overlay (ESC MTG) ALP3 t0.4	1.000
45	801-312-AA	E.S.C ABS 94HB Natural CR-Plating	1.000
46	814-214	Lens (For ESC MTG) Acryl Smoke RED	1.000
47	826-124-D	Knob Control ABS 94HB Natural CR-Plating	3.000
48	826-296	Knob Channel ABS Natural CR-Plating	1.000
49	826-298	Knob Squelch ABS 94HB Natural CR-Plating	2.000

NO.	PART NO.	PART NAME & DESCRIPTION	Q'TY
50	826-297	Knob Volume ABS 94HB Natural CR-Plating	2.000
51	881-614	Spring (SQ.SW MTG) SK5 t0.25	2.000
52	881-613	Spring (VOL.SW MTG) SK5 t0.25	1.000
53	895-028	Cushion 30X50Xt10 Rubber Sponge Stick.	1.000
54	423-528-6	Power Cord SHD-61101	1.000
55	600-060	Securing Screw M6X12(P:1)	4.000
56	625-007	(+)Tapping Screw(TH) 5X12-1S Zn-Plat	4.000
57	660-138	Washer Rubb. \varnothing 7X \varnothing 25Xt1.5 BLK	4.000
58	664-518	Washer (Lock"B" Type) M5 Zn-Plat	4.000
59	723-919-A	Bracket (SET MTG)	1.000
60	401-738	P.C.B Volume 30X23X1.6 94HB 1/0	1.000
61	432-074-0	SW Push JPS-2281	1.000
62	401-796	P.C.B SUB 17X14X1.6 94HB 1/0	1.000
63	401-771	P.C.B SUB-F 30X23X1.6 94HB 1/0	1.000
64	411-145	P.C.B Main 194X188X1.6 94HB 1/0	1.000
65	401-739-A	P.C.B SUB 55X24X1.6 FR4 1/1	1.000
66	401-797-A	P.C.B SUB 53X45X1.6 FR4 1/1	1.000
67	401-741	P.C.B SUB B 28.4X23X1.6 FR4 1/1	1.000
68	401-762	P.C.B SUB C 31X23X1.6 FR4 1/1	1.000
69	421-046-7	Connector CH-239(A) SW-1229	1.000
70	421-550-5	Connector Socket SW-1464	1.000
71	209-069-0	Transistor 25C1969	1.000
72	826-375	Knob Push ABS Naturla CR Plate	1.000
73	853-105	Bushing Nylone66+Glass	2.000
74	893-470	Cushion 4X12Xt2.5 Rubb.Spo.Stic.	2.000
75	906-060-A	Insulation Plate Insulationpaper t0.25 Sticker	2.000
76	623-663	(+)Tapping Screw(BH) T3X10-2S	2.000
77	664-320	Washer(Lock"B"Type) M3 "B" Ni-Plat	2.000
78	720-050	Bracket(MIC MTG) SPC 60X35Xt1	1.000
79	401-794	P.C.B SUB-J 14X17.8X1.6 FR4 1/1	1.000



MODEL: 148 NW ST

148NW PART LIST

43	KER-102P02-1	POT.V6LM 20KO A 1KOHM FOR 148ST	1
44	KER-D502B102B-1	VR DUAL SHAFT 5KBO/1KBI	1
45	KER-502P11-2	POT. 5KB RV160-10-20K-B53-3020 FOR 148NW	1
46	KER-203P07-2	POT 20K RV16A-10-20K-B24-3	1
47	KEPC-332-B	PCB MAIN 194X188X1.6MM 94HB	1
48	KEIC-UPC1037HA	IC UPC1037HA	1
49	KEM-WSO553307Z	WASHER SPRING ID3.3X5.5XT0.7	11
50	KEM-NH0553022G	HEX NUT M3.0X0.5X2.2T (3504-1)	11
51	KEM-M2368A	BRACKET (EL CONTACT)	1
52	KEOE-OT402	METER ANALOG H-319-8456	1
53	KEM-OT2356A	CLAMP CUSHION	2
54	KEM-OT0706	FELT STRIP 75X10MM	0.5
55	KET-KTC4369Y	TRANSISTOR KTC4369Y NPN (TO-220IS)	1
56	KEM-M2369	CONTACT PCB BRACKET	1
57	KEM-OT2354	SHOULDER WASHER	2
58	KEM-OT2358	CUSHION FOR CONTACT PCB	1
59	KEPC-386-A	PCB EL CONNECTOR 12X8.5X1.6MM SS 94HB	1
60	KEJ-264	CONNECTEOR FOR EL AMP 2PIN	1
61	KEM-M2370A	SHIELD CAN FOR EL TAIL	1
62	KESW-091	SWITCH SLIDE 3P2T	1
63	KESW-090	SWITCH SLIDE 3P3T	3
64	KEM-M2357	BRACKET -40CH SW	1
65	KESW-089	CHANNEL SELECTOR GPS-0738 40CH	1
66	KEM-P8405B	PUSH COVER	1
67	KET-2SC1969C	TRANSISTOR 2SC1969C NPN (TO-220)	1
68	KET-2SC2166C	TRANSISTOR 2SC2166C NPN (TO-220)	1
69	KEOE-OT415	DC CORD WITH 3A FUSE FOR 148ST	1
70	KEJ-010	ANTENNA RECEPTACLE 89713-0013	1
71	KEM-TS3006B5B	TAPTITE SCREW B/H S M3X6	12
72	KEM-OT2352	FELT	4
73	KEM-TS5012T3Z	TAPPING SCREW T/HD 5X12	4
74	KEM-WE1005306N	OUTER TOOTHED LOCK WASHER DIA. 5 {306}	4
75	KEM-M2359	MOUNTING PLATE	1
76	KEM-OT2360	CUSHION	1
77	KEM-OT5002	KEY HIMERON	4
78	KEM-OT2361	CUSHION	4
79	KEM-M2355	COVER-TOP	1
80	KEM-TS3006B4Z	TAPTITE SCREW B/H T3X6	7
81	KEM-WI0643304N	INNER TOOTHED LOCK WASHER DIA. 3(404)	7
82	KEM-OT2359	CUSHION	1
83	KEM-M2364	SHIELD	2
84	KEM-OT2353	INSULATION SHEET	2
85	KEJ-012	SPEAKER JACK JC-304B	2

148NW PART LIST

ITEM	P/N	DESCRIPTION	QTY
1	KEM-P7001A	FRONT CABINET	1
2	KEM-OT7001	FELT DIA. 28	1
3	KEM-OT0702	SPONGY 38 OD X26 ID X 5 THK.	1
4	KESP-016	MIC DYNAMIC	1
5	KEM-P7003A	MIC BRACKET	1
6	KEM-TS2608B1N	TAPPING SCREW B/HD T2.6X8	3
7	KESW-079	PUSH BUTTON SWITCH 4P2T	1
8	KEM-P7103E	PTT SWITCH KNOB	1
9	KEM-TS2606B1N	TAPPING SCREW B/HD T2.6X6	1
10	KEM-WP0952805N	M2.8 PLAIN WASHER 103J-1	1
11	KEM-P7002A	REAR CABINET	1
12	KEM-P7107B	HANGING KNOB	1
13	KEM-TS3010P1B	TAPPING SCREW P/HD T3X10	1
14	KEM-WI1003903X	SELF LOCKING WASHER DIA .4	1
15	KETC-036-5	CURL CORD 4 CORES 3.05M	1
16	KEM-OT9005	PVC SLEEVE-CURL CORD	0
17	KEJ-163	MIC	1
18	KEM-M8407A	LOCK SPRING	2
19	KEM-P2354A	OUTER KNOB	2
20	KEM-M8403	INSERT 1	2
21	KEM-P2355A	INNER KNOB	2
22	KEM-P2356	VR KNOB	3
23	KEM-P2353	BAND SELECT KNOB	1
24	KEM-OT2357	"EL" OVERLAY (16285-LA)	1
25	KEOE-OT412	"EL" LAMP (15897-EN)	1
26	KEM-MS3008C2N	M3X8 C/HD SCREW	4
27	KEM-P2351-01	FRONT PANEL	1
28	KEM-MS2604P2N	M2.6X4 P/HD SCREW	11
29	KEM-P2352	LED LENS	1
30	KEM-MS3006B2N	M3X6 B/HD SCREW	11
31	KEM-M2352-01	BRACKET-FRON PANEL	3
32	KEM-M2351A	SIDE PANEL	2
33	KEM-MS3008B2N	M3X8 B/HD SCREW	8
34	KEM-MS3012C2N	M3X12 C/HD SCREW	1
35	KEM-MS3010B2N	M3X10 B/BD SCREW	1
36	KEM- AN3314003YB	M3.0 ANT TERMINAL(10014-6) NI BRASS	2
37	KEM-M2366A	HEAT SINK	1
38	KEM-OT9002	BLIND RIVET DIA 3.2X6	3
39	KEIC-KIA7809P	IC KIA7809P VOLTAGE REGULATOR TO-200AB	1
40	KEJ-241	SOCKET 4PIN FOR MIC	1
41	KEM-M2358	BRACKET-PCB	1
42	KER-D104B103A-1	VR DUAL SHAFT 100KBO/10KAI W/SW	1

148NW PART LIST

86	KEM-M2365-01	NAME PLATE	1
87	KEM-M2353	REAR PANEL	1
88	KEJ-060	JACK DC POWER 2S-I0813 #01	1
89	KESP-085	SPEAKER 4 OHM 3W 92MM	1
90	KEM-NH0553022G	HEX NUT M3.0X0.5X2.2T (3504-1)	4
91	KEM-M2367	BRACKET FOR SHIELD CASE	1
92	KEM-M8411A	SHIELD CASING	1
93	KEM-TS3006B5B	TAPTITE SCREW B/H S M3X6	4
94	KEM-M2360	BRACKET-MIC BODY	1
95	KEM-TS3010P1N	TAPPING SCREW T/HD T3X10	2
96	KEM-WE0643304N	M3 EXT TOOTH WASHER (304)	2
97	KEM-M2354	COVER-BOTTOM	1

VOLTAGE CHART

Test Condition's

- Channel: 9
- Squelch: Minimum
- NB.ANL/ ANL/ OFF SW: OFF
- S.RF/ CAL/ SWR: S.RF
- Vioclock: Position to Out 1 KHz tone to speake
- Volume: Minimum
- RF Gain: Maximum
- CB/PA SW: CB
- HI/ NOR/LOW: HI

1. TR

Pin No.		RX			TX		
		E	C	B	E	C	B
TR1	USB	0.57	8.01	1.295	0	0	0
	AM	0.57	8.01	1.295	0	0	0
	LSB	0.57	8.01	1.295	0	0	0
TR3	USB	1.58	7.95	2.34	0	0	0
	AM	1.58	7.95	2.34	0	0	0
	LSB	1.58	7.95	2.34	0	0	0
TR4	USB	0.57	8.29	0	0	0	0
	AM	0.57	8.29	0	0	0	0
	LSB	0.57	8.29	0	0	0	0
TR5	USB	0	8.28	30 mV	20 mV	0	0
	AM	0	8.28	30 mV	20 mV	0	0
	LSB	0	8.28	30 mV	20 mV	0	0
TR6	USB	0	7.61	10 mV	0	0	0
	AM	0	7.61	90 mV	0	0	0
	LSB	0	7.61	10 mV	0	0	0
TR7	USB	8.29	0	7.64	0	0	0
	AM	8.29	0	7.64	0	0	0
	LSB	8.29	0	7.64	0	0	0
TR10	USB	2.44	2.44	3.18	0	0	0
	AM	2.44	2.44	3.18	0	0	0
	LSB	2.44	2.44	3.18	0	0	0
TR12	USB	0.57	8.27	0	0	0	0
	AM	0.57	8.27	0	0	0	0
	LSB	0.57	8.27	0	0	0	0
TR13	USB	8.29	0.71	8.29	0	0	0
	AM	8.29	0.71	8.29	0	0	0
	LSB	8.29	0.71	8.29	0	0	0
TR14	USB	1.87	8.19	2.6	0	0	0
	AM	1.87	8.19	2.6	0	1.05	0
	LSB	1.87	8.19	2.6	0	0	0
TR16	USB	0.5	8.04	1.13	0	0	0
	AM	0.5	8.04	1.13	0	0	0
	LSB	0.5	8.04	1.13	0	0	0
TR17	USB	0	2.95	0.7	0	0	0
	AM	0	2.95	0.7	0	0	0
	LSB	0	2.95	0.7	0	0	0

Pin No.		RX			TX		
		E	C	B	E	C	B
TR18	USB	1.65	8.03	2.36	0	0	0
	AM	1.65	8.03	2.36	0	0	0
	LSB	1.65	8.03	2.36	0	0	0
TR19	USB	0.7	5.08	1.3	0	0	0
	AM	0.7	5.50	1.3	0	0	0
	LSB	0.7	5.08	1.3	0	0	0
TR21	USB	0	2.94	0	0	2.94	0
	AM	0	2.99	0.24	0	1.87	2.55
	LSB	0	2.99	0	0	2.94	0
TR22	USB	0.46	3.22	1.10	0.46	3.22	1.10
	AM	0.46	3.22	1.10	0.46	3.22	1.10
	LSB	0.46	3.22	1.10	0.46	3.22	1.10
TR23	USB	1.16	4.06	1.81	1.16	4.06	1.81
	AM	1.16	4.06	1.81	1.16	4.06	1.81
	LSB	1.16	4.06	1.81	1.16	4.06	1.81
TR24	USB	0	0	0.732	0	0	0
	AM	0	0	0.732	0	0	0
	LSB	0	0	0.732	0	0	0
TR25	USB	6.57	0.73	6.35	6.57	0	6.35
	AM	6.57	0.73	6.35	6.57	0	6.35
	LSB	6.57	0.73	6.35	6.57	0	6.35
TR26	USB	4.30	6.20	1.0	4.16	6.20	1.0
	AM	4.11	6.20	1.0	1.71	6.20	1.0
	LSB	4.30	6.20	1.0	4.18	6.20	1.0
TR27	USB	3.22	0	3.22	3.22	0	3.22
	AM	3.22	0	3.22	3.22	0	3.22
	LSB	3.22	0	3.22	3.22	0	3.22
TR28	USB	7.51	13.86	8.14	7.51	13.63	8.14
	AM	7.51	13.86	8.14	7.51	13.63	8.14
	LSB	7.51	13.86	8.14	7.51	13.63	8.14
TR29	USB	1.16	8.16	1.463	1.16	8.16	1.463
	AM	1.09	8.16	1.463	1.09	8.16	1.463
	LSB	1.06	8.16	1.463	1.06	8.16	1.463

Pin No.		RX			TX		
		E	C	B	E	C	B
TR30	USB	3.24	7.93	3.84	3.24	7.93	3.84
	AM	3.20	7.93	3.84	3.19	7.93	3.84
	LSB	3.18	7.93	3.84	3.18	7.93	3.84
TR31	USB	0	0	0	0	8.26	0
	AM	0.24	0.24	0.953	7.07	8.26	7.76
	LSB	0	0	0	0	8.26	0
TR32	USB	1.50	7.16	2.17	1.50	7.16	2.17
	AM	0	0	0	1.50	6.05	1.84
	LSB	1.50	7.16	2.17	1.50	7.16	2.17
TR33	USB	0	8.28	0	0	0	0
	AM	7.0	8.28	7.73	0	0	0.66
	LSB	0	8.28	0	0	0	0
TR34	USB	0	6.2	0	2.52	6.2	0
	AM	5.49	6.2	0	4.96	6.2	0
	LSB	0	6.2	0	2.52	6.2	0
TR35	USB	7.8	13.8	8.0	0	0	0.70
	AM	7.8	13.8	8.0	0	0	0.70
	LSB	7.8	13.8	8.0	0	0	0.70
TR36	USB	0	13.8	0	0	13.47	0.74
	AM	0	13.2	0	0	7.2	0.65
	LSB	0	13.8	0	0	13.47	0.74
TR37	USB	0	7.11	0	0.76	7.11	1.34
	AM	0	7.11	0	0.76	7.11	1.34
	LSB	0	7.11	0	0.76	7.11	1.34
TR38	USB	0	13.86	0	0	13.37	0.68
	AM	0	13.26	0	0	7.13	0.47
	LSB	0	13.8	0	0	13.4	0.68
TR39	USB	0	0	0	0.96	8.26	1.65
	AM	0	0	0	0.96	8.26	1.65
	LSB	0	0	0	0.96	8.26	1.65
TR41	USB	13.8	13.8	6.8	13.57	13.5	6.8
	AM	13.2	13.8	6.8	5.8	13.1	6.5
	LSB	13.8	13.8	6.8	13.57	13.5	6.8