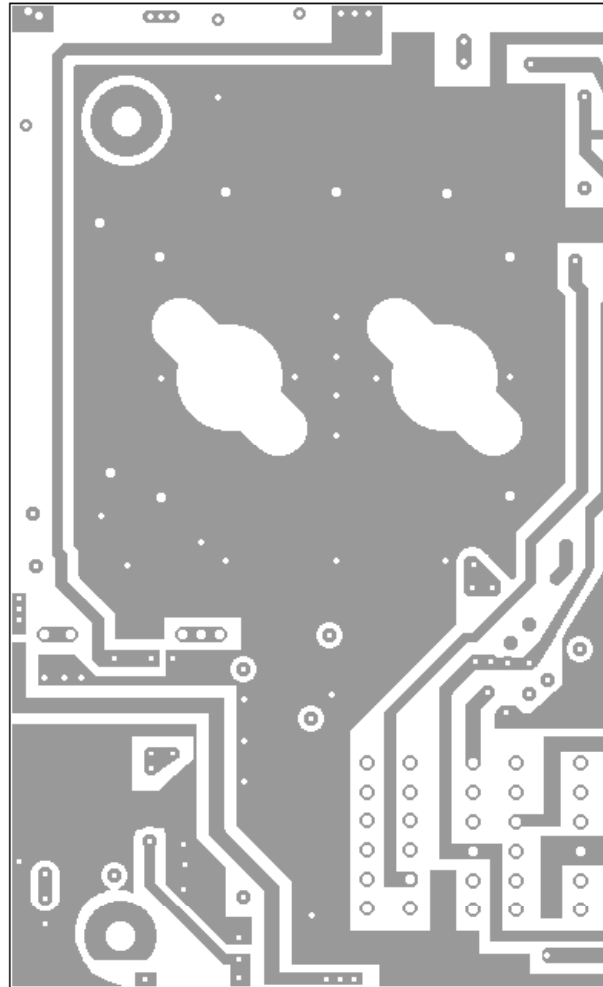
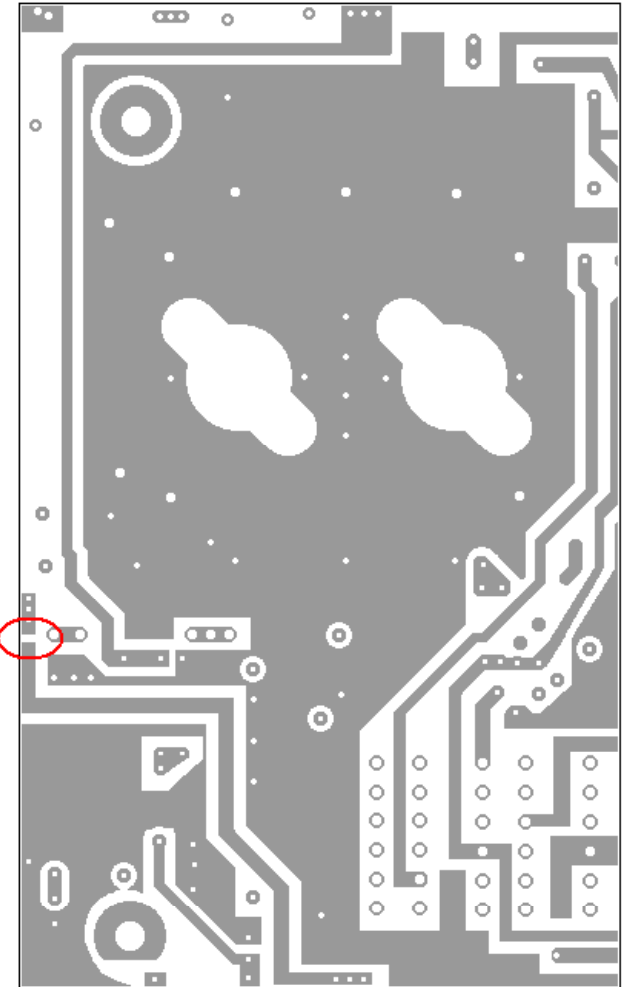


Top View



Final Amp PCB Board #2 and #4  
Bottom View



Final Amp PCB Bottom View  
PCB Board #1 and #3

**Note: On board #1 and #3 there is a trace cut shown circled in Red above.**

Texas Star DX1600V  
PCB Trace Layouts Final Amp  
2007 and later Production  
CBTricks.com Rev. # 1.0  
Copyright © 2007, CBTricks.com All Rights Reserved